

INSTRUCTION MANUAL

MINI WALKING FOOT
SEWING MACHINE

& PARTS LIST

CONSEW®



CONTENTS

| | |
|---|----|
| Preface | |
| Speed of machine..... | 1 |
| Oiling | 1 |
| Needle | 2 |
| Thread | 2 |
| Winding the bobbin..... | 3 |
| Threading the machine and needle..... | 4 |
| Prepare for sewing..... | 5 |
| To start sewing..... | 5 |
| To regulate the length of stitch..... | 6 |
| Reverse sewing..... | 6 |
| Tensions..... | 7 |
| Adjusting the Bobbin Case..... | 8 |
| To remove the hook and clean the race..... | 9 |
| Instructions to repair machine..... | 10 |
| Constructional drawing..... | 11 |
| External group..... | 12 |
| External group parts list..... | 13 |
| Sewing transmission group..... | 14 |
| Sewing transmission group parts list..... | 15 |
| Shuttle transmission group..... | 16 |
| Shuttle transmission group parts list..... | 17 |
| Feed transmission group..... | 18 |
| Feed transmission group parts list..... | 19 |
| Driving & reversing mechanism group..... | 20 |
| Driving & reversing mechanism group parts list..... | 21 |
| Electric power & dynamic transmission..... | 22 |
| Electric power & dynatransmission group parts list..... | 23 |
| Zig Zag mechanism group..... | 24 |
| Zig Zag mechanism group parts list..... | 25 |

PREFACE

This semi-industrial sewing machine makes a single needle lock stitch and is equipped with a high lifting, independent upper and lower feed mechanism. It is intended for stitching medium, heavy, and extra heavy cloth, canvas, upholstery materials and light leather.

This Mini-Walking Foot sewing machine's feeding mechanism is composed of upper and lower feed dogs which are synchronized to feed the material either forward or reverse. Both lifting and feeding feet alternatively press the material tightly together, permitting even stitching.

Remark : This instruction manual is commonly applied to our series of mini walking foot sewing machine, which refers to straight sewing model and zig zag sewing model.

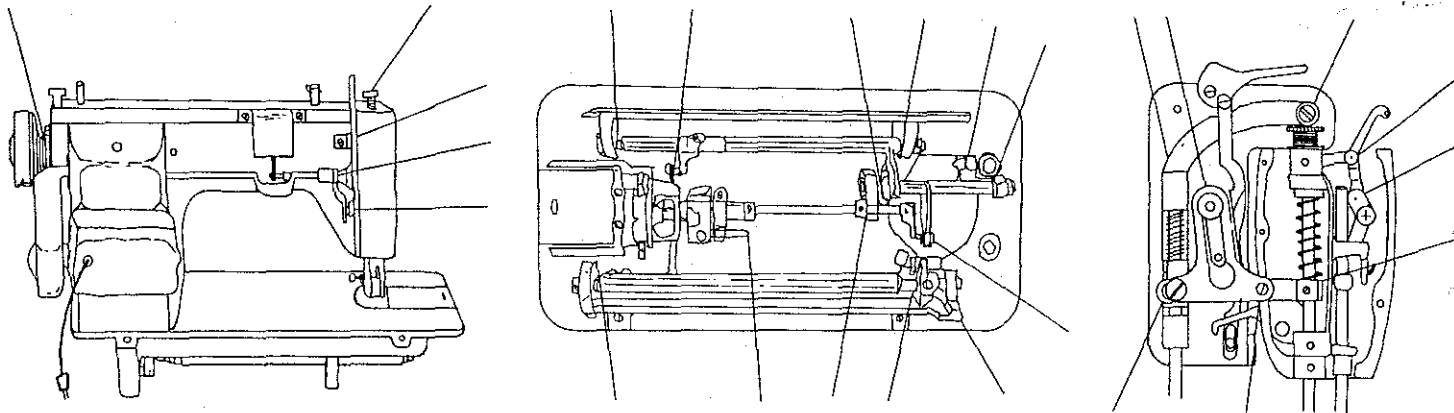
SPEED OF MACHINE

The maximum speed recommended for this machine is 900 RPM or "stitches per minute". Use regular house-hold circuit 115 Volts, 60 HZ. The machine is equipped with a one tenth (1/10) HP motor with reduction pulley to provide good power at the recommended speed.

This sewing machine can be mounted on a commercial stand. To do so, requires a special cut-out table top, a one inch (1") diameter pulley, a special Balance Wheel Item No. 11, and a maximum 1725 RPM motor.

OILING

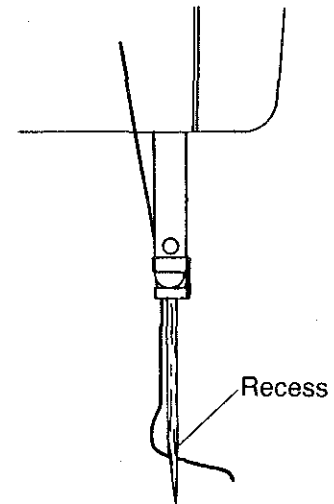
Before operating, oil all "metal to metal" working parts, and at the places indicated. Use only genuine sewing machine oil. Operate the machine briefly on scrap material after oiling to prevent soiling the work. Frequent oiling is recommended.



NEEDLE

Use 135x17 needles size 18 to 23. Use size 22 for most medium to heavy sewing.

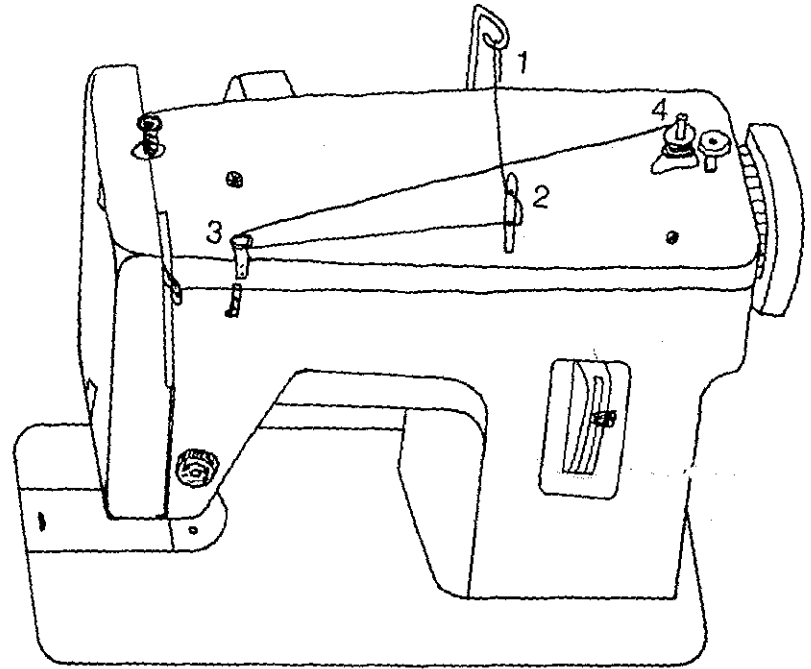
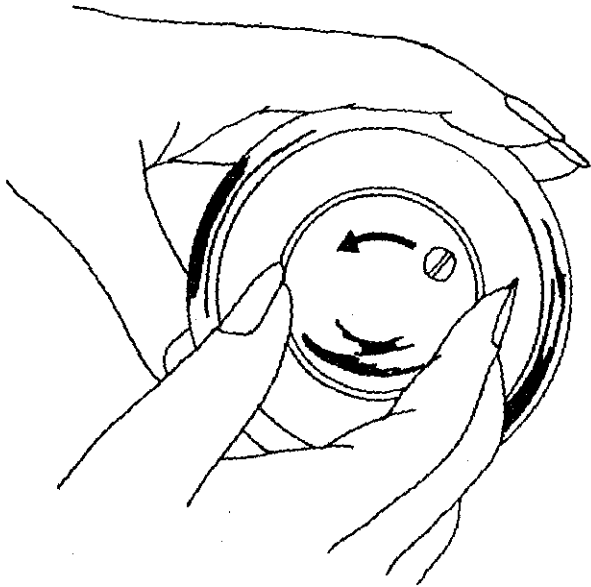
Install needle as illustrated.



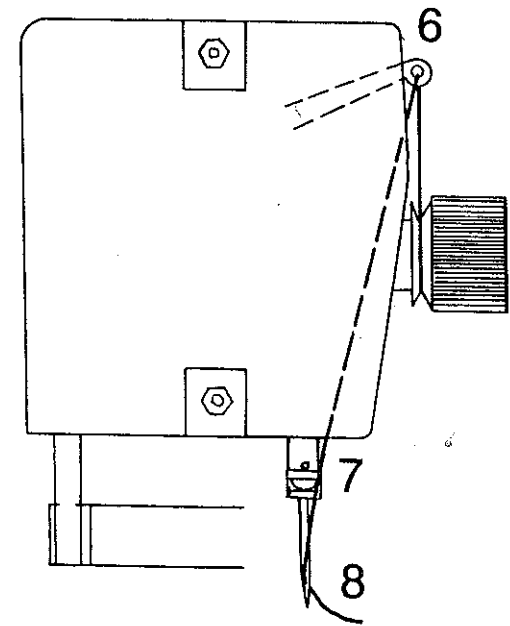
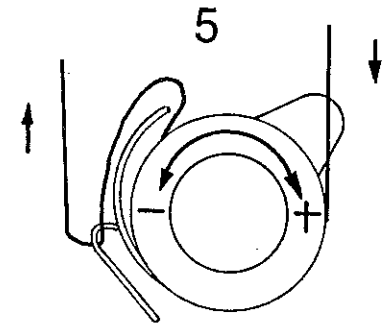
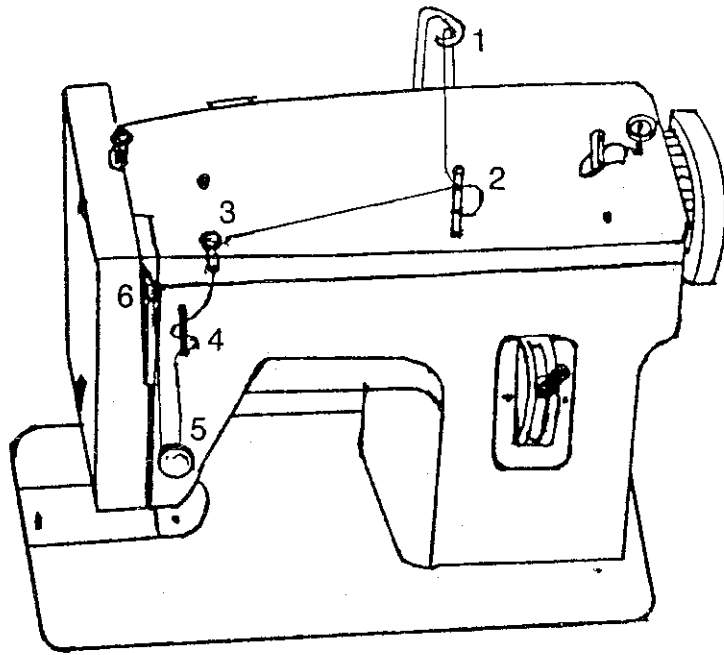
THREAD

To obtain the best results with your sewing machine, we recommend size 69 Bonded Nylon Thread.

WINDING THE BOBBIN



THREADING THE MACHINE AND NEEDLE



PREPARE FOR SEWING

Thread the machine. Then pick up the bobbin thread as follows:

- (1) While holding the loose end of the needle thread in your left hand, turn the balance wheel toward you by hand until the needle moves down and up again to its highest point.
- (2) Pull the needle thread gently, and the bobbin thread will come up with it in the form of a loop through the needle hole.
- (3) With your finger, pull this loop until the end of the thread appears. If the bobbin thread does not rise, check to see if at least 5 or 6 inches of bobbin thread is hanging loosely from the bobbin case.

TO START SEWING

- (1) With the needle raised, lay the lower or bobbin thread straight back from the needle hole.
- (2) Place the material to be sewn under the presser feet and lower them onto the material.
- (3) Hold the upper or needle thread (threaded through the eye of the needle) with the fingers of the left hand. Turn the balance wheel toward you with your right hand until the outside presser foot reaches its most backward position.
- (4) Now operate the knee or foot control to start sewing.

The above procedure is necessary so the motor will start the machine to sewing. Do not help the feeding of the machine by hand, as this may bend or break the needle. Also, damage to the hook can occur.

The machine may run a little slow when it's new. However, it will begin to "free up" and run smoothly with continued use.

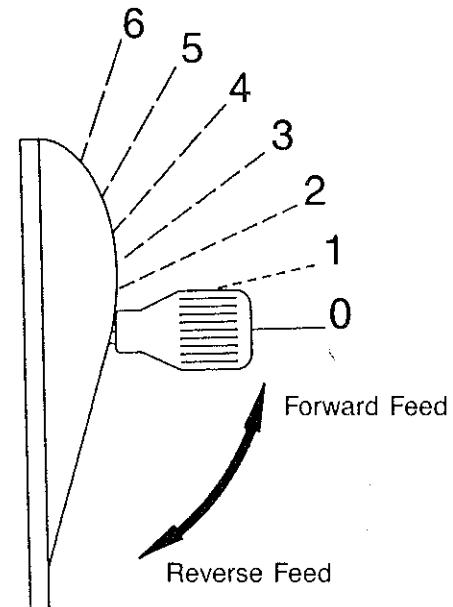
During operation, the balance wheel of the machine always turns toward the operator. To avoid tangled thread and jamming of the sewing hook, do not turn the balance wheel backward (away from the operator).

WARNING: Never operate the machine without material under the presser feet. Your machine will probably "lock" and cannot be operated until the thread is cleaned out of the hook race.

TO REGULATE THE LENGTH OF STITCH

Most sewing will be done with the maximum stitch length. However, the length of the stitch can be adjusted as follows:

- (1) Loosen the thumb nut on the stitch length lever.
- (2) Raise the stitch length (feed regulator) lever until the desired stitch length is obtained.
- (3) Tighten the thumb nut.

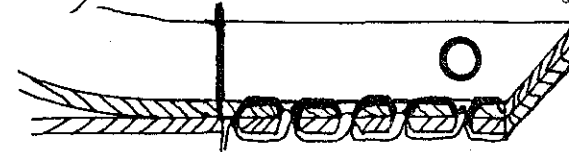
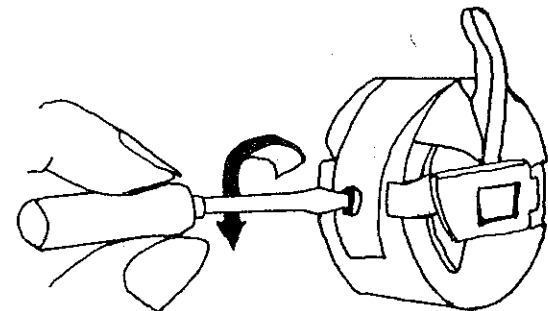
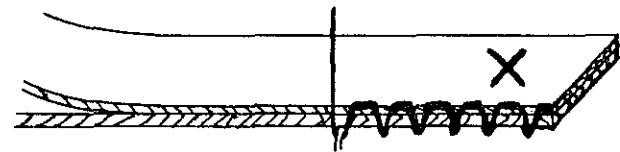
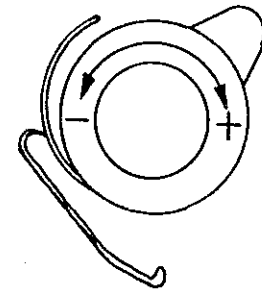
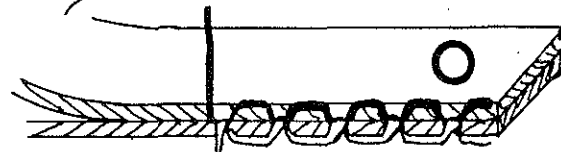
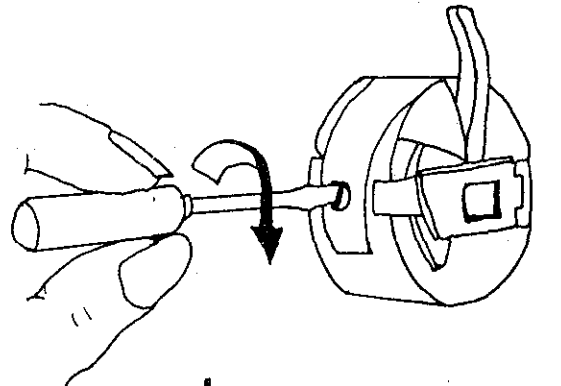
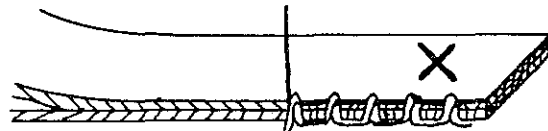
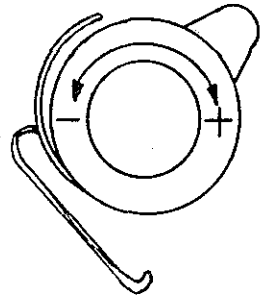


REVERSE SEWING

To sew in reverse:

- (1) Lower the feed regulator (stitch length) lever all the way to the bottom of the slot in the stitch length plate.
- (2) Hold the lever there until reverse sewing is completed.
- (3) Then return the lever to the forward position.

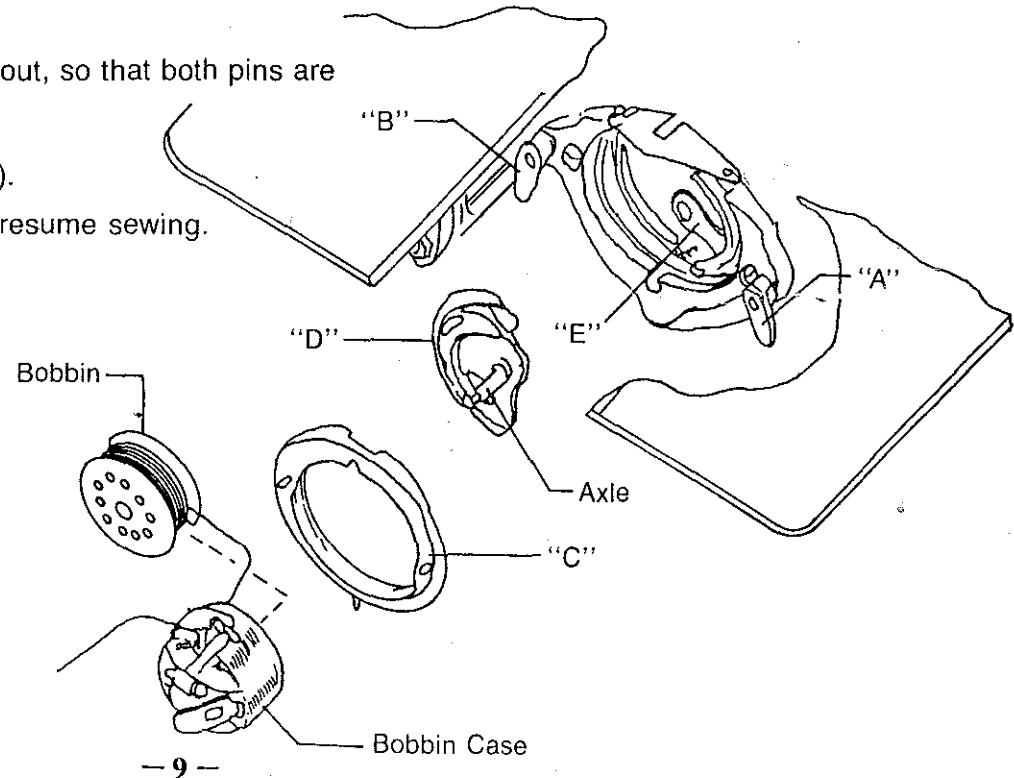
Adjusting the Bobbin Case



TO REMOVE THE HOOK AND CLEAN THE RACE

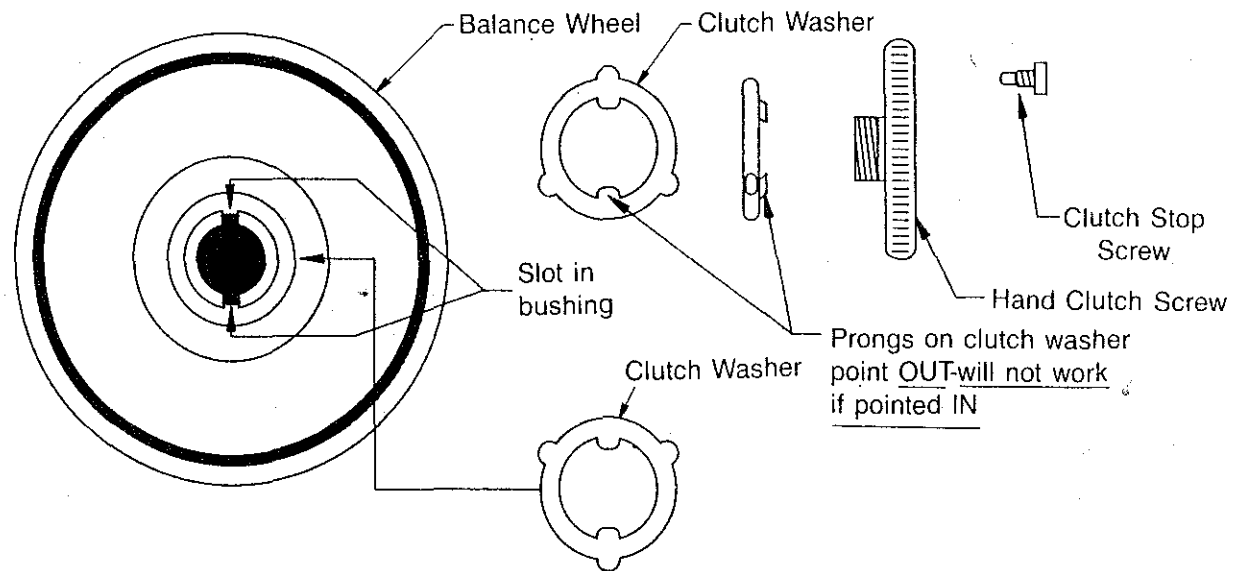
DO NOT FORCE ANY OF THESE OPERATIONS

- (1) Turn the balance wheel by hand until the needle is at its highest point.
- (2) Remove the bobbin and bobbin case.
- (3) Turn knob (A) one half turn toward you.
- (4) Turn knob (B) one half turn away from you.
- (5) Remove retaining ring (C) and hook (D) by grasping the axle of the hook.
- (6) Remove accumulated lint and thread from the retaining ring, hook, and race body.
- (7) Replace hook (D) in race body with the axle facing out, forming a perfect circle with the driver (E).
- (8) Replace retaining ring (C), polished side out, so that both pins are under knobs (A) and (B).
- (9) Lock the retaining ring knobs (A) and (B).
- (10) Replace bobbin and bobbin case, and resume sewing.

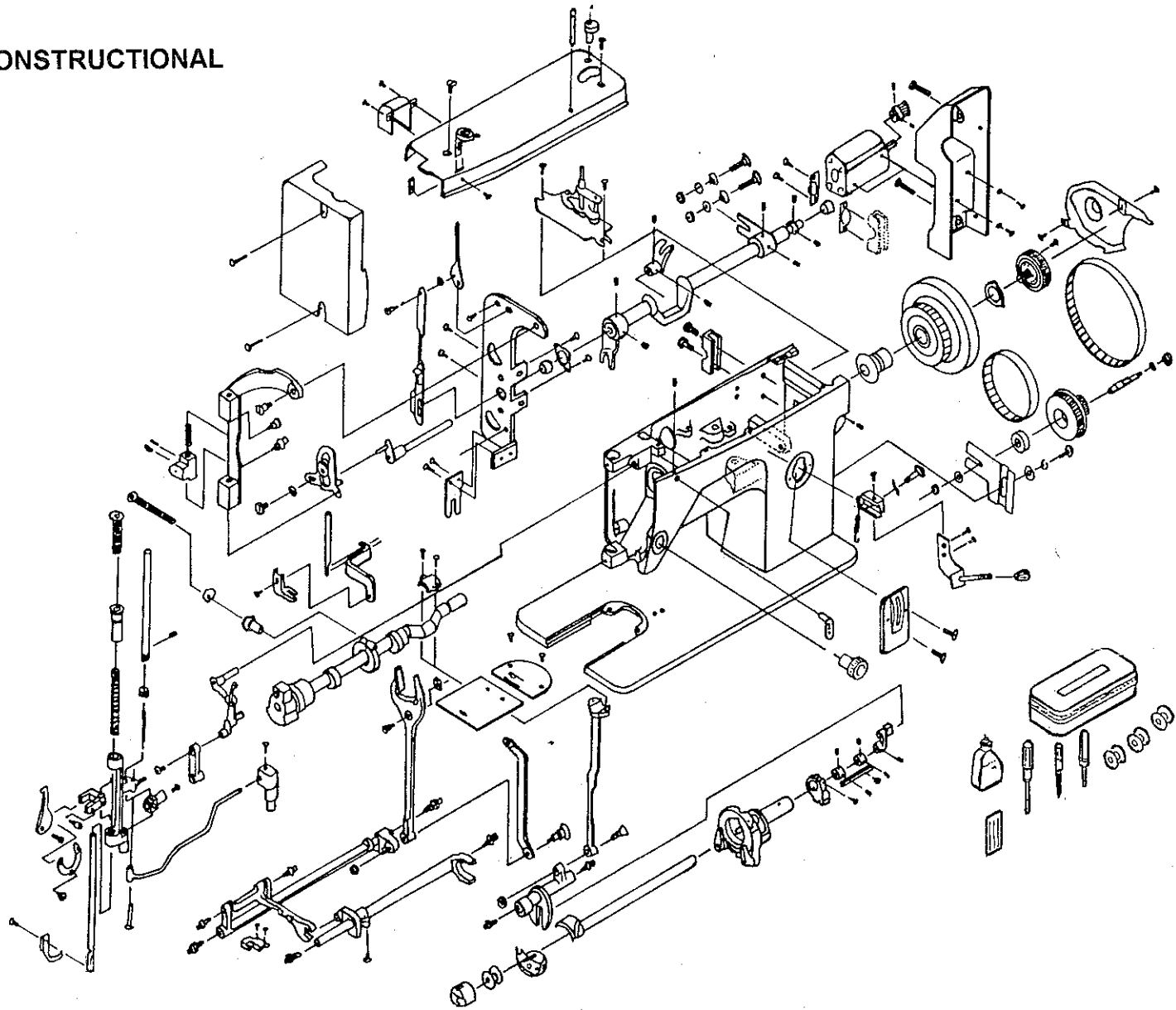


INSTRUCTIONS TO REPAIR MACHINE SHOULD THE BALANCE WHEEL AND MOTOR RUN BUT THE MACHINE WILL NOT SEW

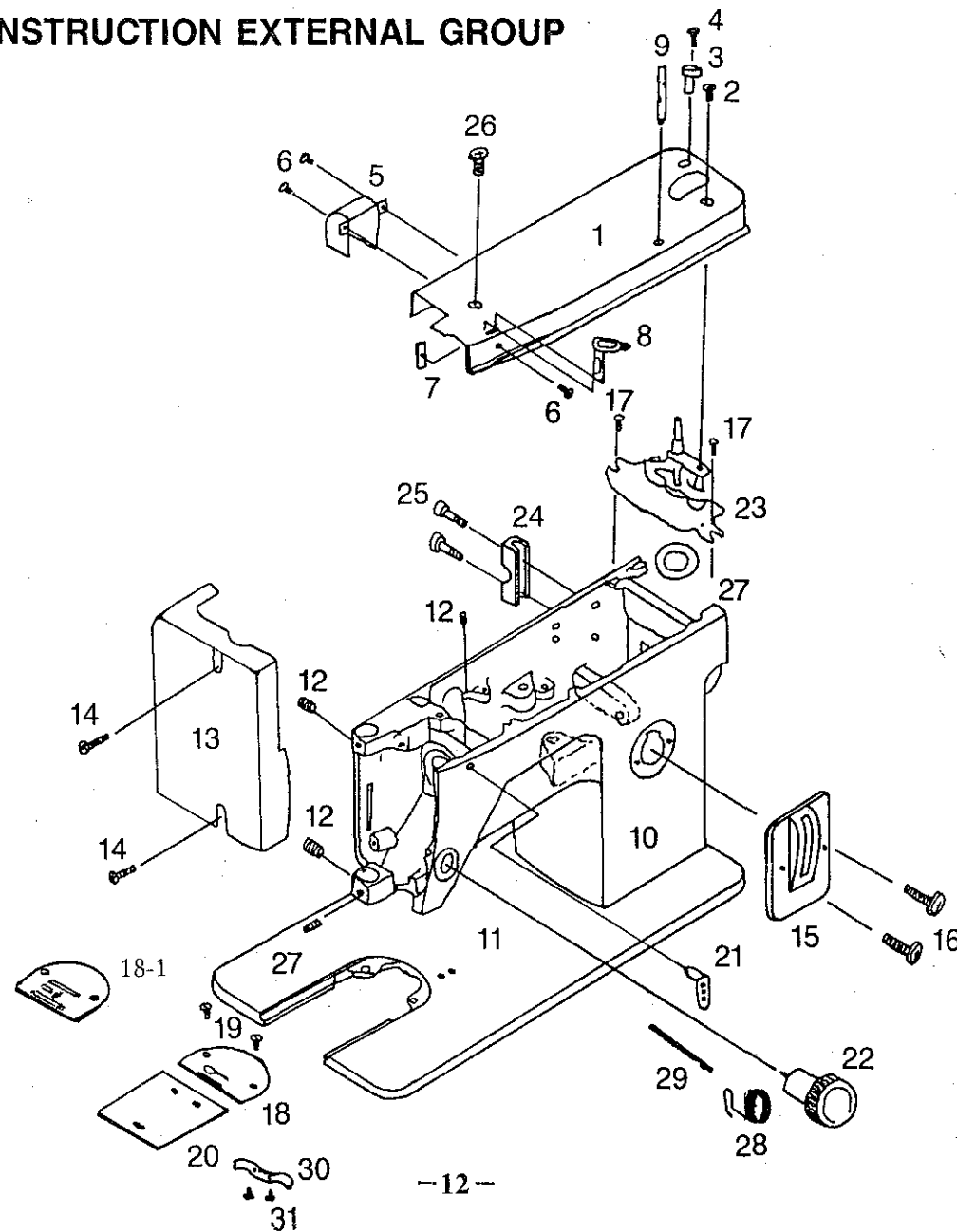
- (1) Remove clutch stop screw.
- (2) Remove hand clutch screw.
- (3) Notice position of prongs on clutch washer in slot of balance wheel bushing.
- (4) Remove clutch washer and make 1/2 turn and replace.
- (5) Screw in hand clutch screw very tight
- (6) Screw in stop screw.
- (7) Back off on hand clutch screw.
- (8) Run motor and check to see if balance wheel turns freely without running the machine.
- (9) Tighten hand clutch screw and the machine should run properly.



CONSTRUCTIONAL



GROUP 1 CONSTRUCTION EXTERNAL GROUP

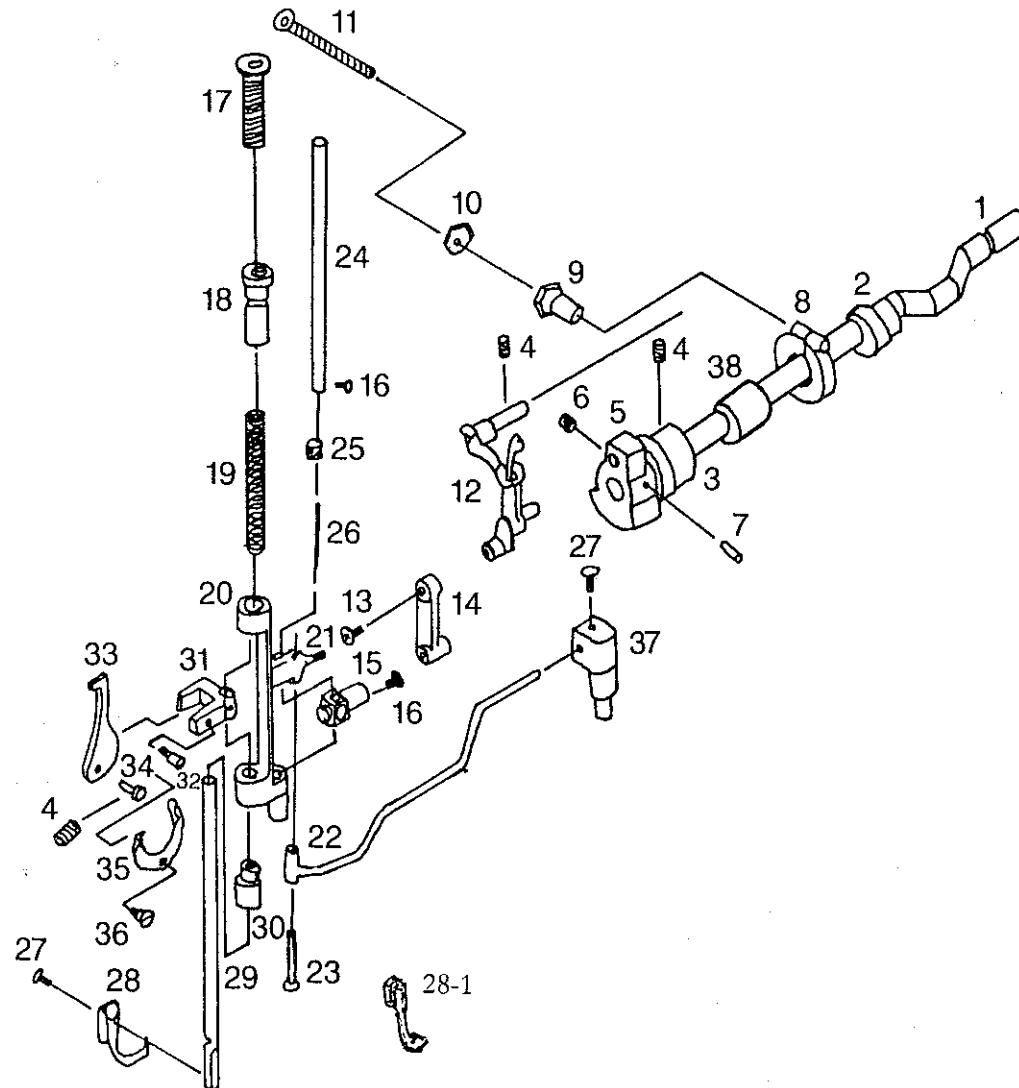


GROUP 1

| KEY NO. | PART NO. | PART NAME | Q'TY |
|---------|----------|---|--------|
| 1 | W047 | TOP PLATE | 1 |
| 2 | B071 | TOP PLATE SET SCREW | 1 |
| 3 | E066 | BOBBIN WINDER STOPPER | 1 |
| 4 | E066-2 | BOBBIN WINDER STOPPER SET SCREW | 1 |
| 5 | W047-1 | SMALL PLATE COVER | 1 |
| 6 | A092 | SMALL PLATE COVER SET SCREW BOBBIN WINDER ASSEMBLY SET SCREW | 2 1 |
| 7 | E070-1 | BOBBIN WINDER TENSION ASSEMBLY SET NUT | 1 |
| 8 | E070 | BOBBIN WINDER TENSION ASSEMBLY | 1 |
| 9 | W047-2 | SPOOL PIN | 1 |
| 10 | W001 | ARM BODY | 1 |
| 11 | W002 | BED | 1 |
| 12 | D097 | NEEDLE BAR SUPPORT SET SCREW THREE HOLE THREAD GUIDE SET SCREW | 2 1 |
| 13 | W048 | FACE PLATE | 1 |
| 14 | C097 | FACE PLATE SET SCREW | 2 |
| 15 | W125 | STITCH LENGTH PLATE | 1 |

| | | | |
|------|--------|---|---|
| 16 | A075 | STITCH LENGTH PLATE SET SCREW | 1 |
| 17 | B010 | BOBBIN WINDER SET SCREW | 2 |
| 18 | W032 | NEEDLE PLATE | 1 |
| 19 | A052 | NEEDLE PLATE SET SCREW | 2 |
| 20 | A048-B | SHUTTLE RACE SLIDE | 1 |
| 21 | W029 | THREE HOLE THREAD GUIDE | 1 |
| 22 | W184-1 | DIAL TENSION ASSEMBLY | 1 |
| 23 | W030 | BOBBIN WINDER | 1 |
| 24 | W025 | CRANK ROD BEARING SET BASE | 1 |
| 25 | W025-1 | CRANK ROD BEARING SET BASE SET SCREW | 2 |
| 26 | E072 | TOP PLATE SET SCREW | 1 |
| 27 | A117 | BOBBIN WINDER RUBBER RING | 1 |
| 28 | W184-3 | THREAD TAKE-UP/CHECK-SPRING | 1 |
| 29 | W184-2 | TENSION RELEASE PIN | 1 |
| 30 | A049 | SHUTTLE RACE SLIDE SPRING | 1 |
| 31 | A050 | SHUTTLE RACE SLIDE SPRING SET SCREW | 1 |
| 18-1 | W032-1 | ZIG ZAG NEEDLE PLATE | 1 |

GROUP 2 SEWING TRANSMISSION GROUP

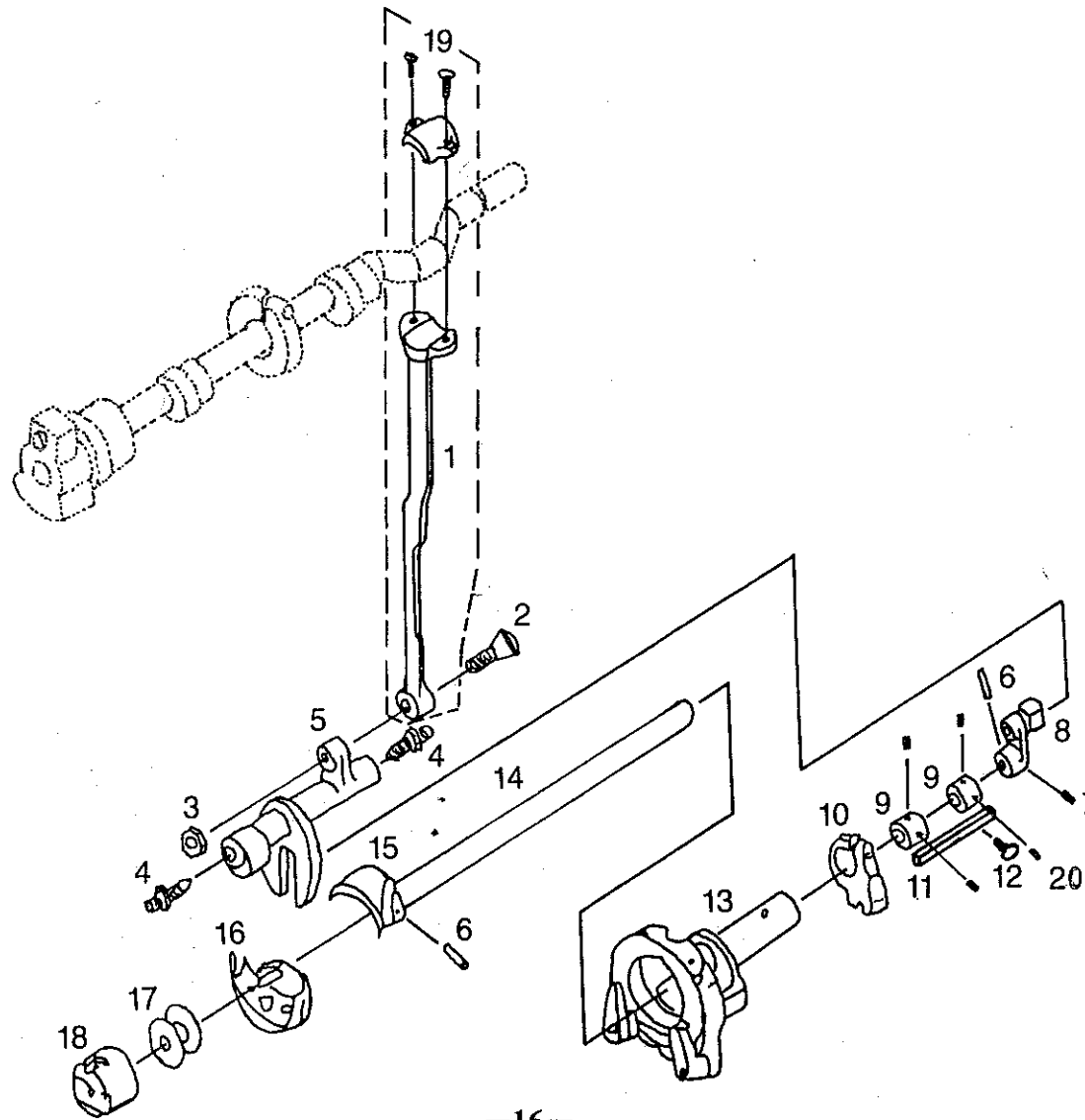


GROUP 2

| KEY NO. | PART NO. | PART NAME | Q'TY |
|---------|----------|---|------|
| 1 | E053 | ARM SHAFT | 1 |
| 2 | B007 | FEED CAM | 2 |
| 3 | B051 | ARM SHAFT BUSHING | 1 |
| 4 | A012 | THREAD TAKE-UP ASSEMBLY SET SCREW | 1 |
| | | ARM SHAFT BUSHING SET SCREW | 1 |
| | | TENSION RELEASE LEVER DRAG LINK PIN SET SCREW | 1 |
| 5 | B048 | THREAD TAKE-UP LEVER CAM | 1 |
| 6 | A029 | THREAD TAKE-UP ASSEMBLY SET SCREW | 1 |
| 7 | E048-1 | THREAD TAKE-UP LEVER CAM SET PIN | 1 |
| 8 | W028-4 | CRANK ROD LEVER CAM FOLLOWER | 1 |
| 9 | W028-2 | CRANK ROD LEVER CAM FOLLOWER ADJUST NUT | 1 |
| 10 | W028-3 | CRANK ROD LEVER CAM FOLLOWER LOCK SCREW | 1 |
| 11 | W028-1 | CRANK ROD LEVER CAM FOLLOWER LOCK NUT | 1 |
| 12 | E020 | THREAD TAKE-UP ASSEMBLY | 1 |
| 13 | E020-2 | NEEDLE BAR CONNECTING ROD SET SCREW | 1 |
| 14 | B018 | NEEDLE BAR CONNECTING ROD | 1 |
| 15 | A042 | NEEDLE BAR CONNECTING STUD | 1 |
| 16 | A092 | NEEDLE SET SCREW | 1 |
| 17 | A031 | PRESSER REGULATING THUMB SCREW | 1 |
| 18 | W010 | PRESSER REGULATING THUMB SET SCREW | 1 |
| 19 | A032 | PRESSER BAR SPRING | 1 |
| 20 | B016 | NEEDLE BAR SUPPORT | 1 |

| | | | |
|------|--------|---|---|
| 21 | A021 | NEEDLE BAR CONNECTING JOINT SET SCREW | 1 |
| 22 | W015 | ZIGZAG CONNECTING ROD | 1 |
| 23 | B099 | NEEDLE BAR CONNECTING JOINT PIN | 1 |
| 24 | W066 | NEEDLE BAR | 1 |
| 25 | W067 | NEEDLE THREAD GUIDE | 1 |
| 26 | W008 | NEEDLE | 1 |
| 27 | A036 | PRESSER FOOT SET SCREW | 1 |
| 28 | W012 | INSIDE PRESSER FOOT | 1 |
| 29 | A035-1 | PRESSER BAR | 1 |
| 30 | B028 | PRESSER BAR LOWER BUSHING | 1 |
| 31 | W039 | PRESSER BAR BARCKET | 1 |
| 32 | A046 | PRESSER BAR ACTUATOR GUIDE SCREW | 1 |
| 33 | W043 | TENSION RELEASE LEVER DRAG LINK | 1 |
| 34 | D020 | TENSION RELEASE LEVER DRAG LINK SET PIN | 1 |
| 35 | W045 | TENSION RELEASE LEVER | 1 |
| 36 | B046 | TENSION RELEASE LEVER SET SCREW | 1 |
| 37 | W016 | ZIGZAG CONNECTING ROD SET BASE | 1 |
| 38 | W065 | PRESSER BAR ACTUATOR "CAM" | 1 |
| 28-1 | B043-1 | ZIG ZAG PRESSER FOOT | 1 |

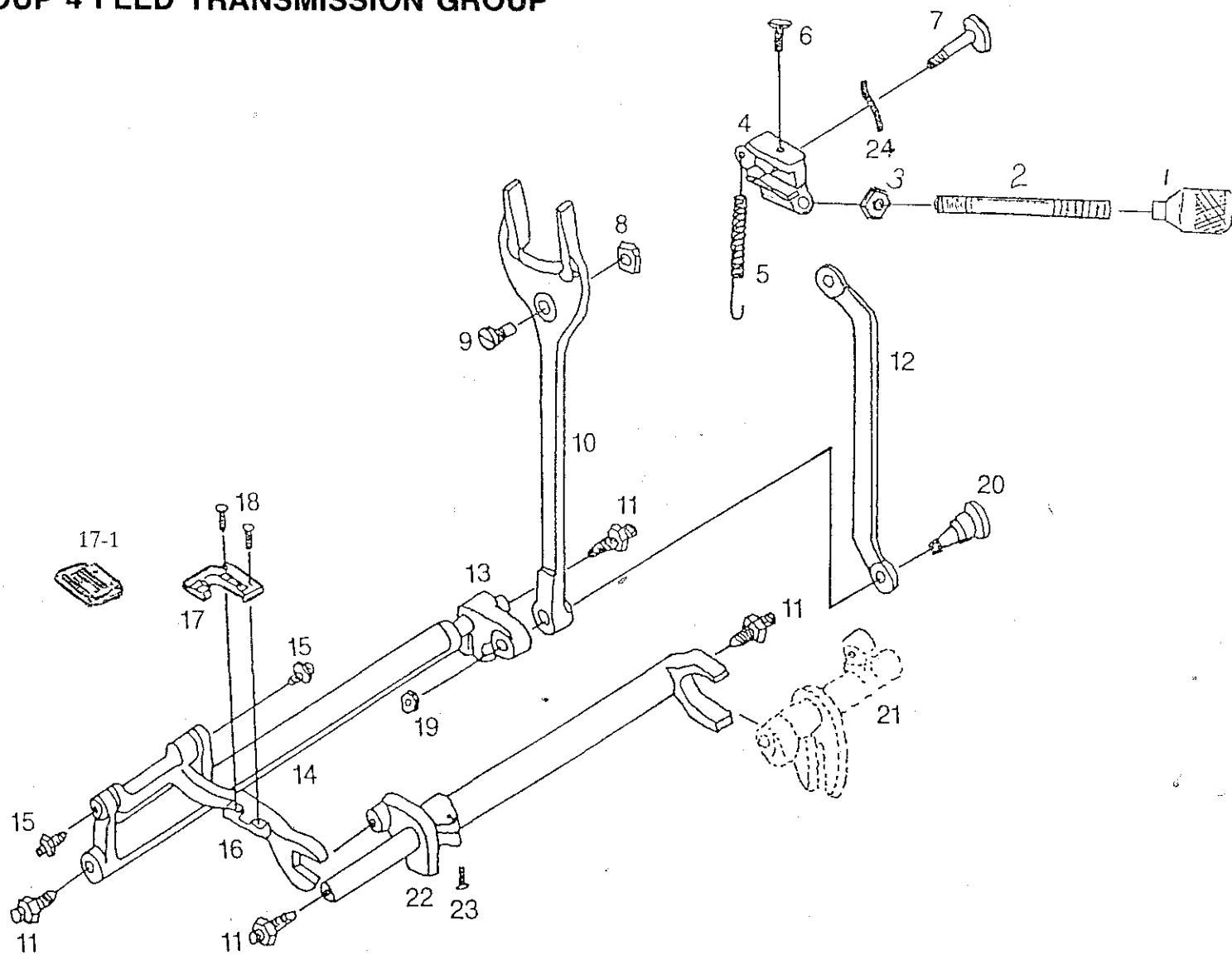
GROUP 3 SHUTTLE TRANSMISSION GROUP



GROUP 3

| KEY NO. | PART NO. | PART NAME | Q'TY |
|---------|----------|---|--------|
| 1 | B139 | CRANK CONNECTING ROD | 1 |
| 2 | A027A | CRANK CONNECTING ROD SET SCREW | 1 |
| 3 | A027B | CRANK CONNECTING ROD SET NUT | 1 |
| 4 | A023 | OSCILLATING SHAFT SET SCREW & NUT | 2 |
| 5 | A024 | OSCILLATING SHAFT | 1 |
| 6 | A018 | SHUTTLE DRIVER PIN OSCILLATING SHAFT CRANK SET PIN | 1 1 |
| 7 | A021 | OSCILLATING SHAFT CRANK SET SCREW | 1 |
| 8 | B179 | OSCILLATING SHAFT CRANK WITH SLIDE BLOCK | 1 |
| 9 | B177 | LOWER SHAFT COLLAR | 2 |
| 10 | B155 | SHUTTLE RACE GUIDE | 1 |
| 11 | A084 | SHUTTLE RACE GUIDE SHAFT | 1 |
| 12 | B153 | SHUTTLE RACE GUIDE SHAFT SET SCREW | 1 |
| 13 | B170 | SHUTTLE RACE GUIDE SHAFT COMPLETE | 1 |
| 14 | B172 | LOWER SHAFT | 1 |
| 15 | W172 | SHUTTLE DRIVER | 1 |
| 16 | D099 | SHUTTLE HOOK | 1 |
| 17 | A107 | BOBBIN | 1 |
| 18 | D100 | BOBBIN CASE ASSEMBLY | 1 |
| 19 | B139-2 | CRANK CONNECTING ROD CAP SET SCREW | 2 |
| 20 | B177-1 | LOWER SHAFT COLLAR SET SCREW | 4 |

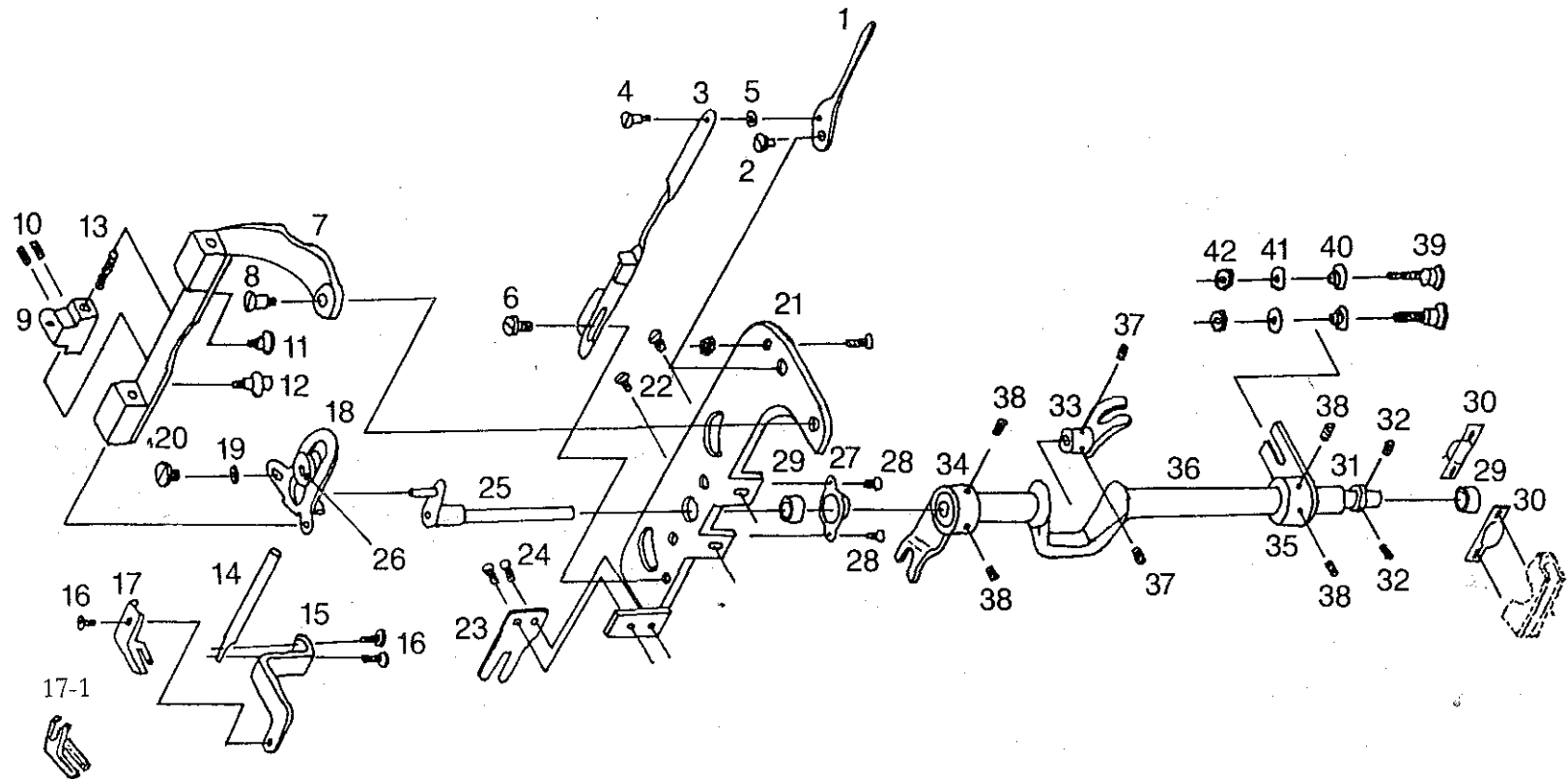
GROUP 4 FEED TRANSMISSION GROUP



GROUP 4

| KEY NO. | PART NO. | PART NAME | Q'TY |
|---------|----------|--|--------|
| 1 | W109 | FEED REGULATOR THUMB NUT | 1 |
| 2 | W105 | FEED REGULATOR LEVER | 1 |
| 3 | A053B-2 | FEED REGULATOR LEVER NUT | 1 |
| 4 | W107 | FEED REGULATOR | 1 |
| 5 | W106 | FEED REGULATOR SPRING | 1 |
| 6 | B010 | FEED REGULATOR SCREW SET SCREW | 1 |
| 7 | W108 | FEED REGULATOR SCREW | 1 |
| 8 | A069B | FEED CONNECTION SLIDE BLOCK | 1 |
| 9 | A069A | FEED CONNECTION SLIDE BLOCK STUD | 1 |
| 10 | B103 | FORKED ROD | 1 |
| 11 | A023 | FEED ROCK SHAFT CENTER SCREW & NUT FEED LIFTING ROCK SHAFT SCREW & NUT | 2 2 |
| 12 | W046 | DRIVING CRANK | 1 |
| 13 | A071B | FEED ROCK SHAFT CRANK | 1 |
| 14 | A071A | FEED ROCK SHAFT | 1 |
| 15 | A076 | FEED BAR CENTER SCREW & NUT | 2 |
| 16 | A075 | FEED BAR | 1 |
| 17 | W011 | FEED DOG | 1 |
| 18 | A078 | FEED DOG SCREW | 2 |
| 19 | W046-1 | DRIVING CRANK GUIDE NUT | 1 |
| 20 | A061 | DRIVING CRANK GUIDE SCREW | 1 |
| 21 | A072 | FEED LIFTING ROCK SHAFT | 1 |
| 22 | A073 | FEED LIFTING ROCK SHAFT CRANK | 1 |
| 23 | A071B-1 | FEED ROCK SHAFT CRANK SET SCREW FEED LIFTING ROCK SHAFT CRANK SET SCREW | 2 |
| 24 | A067 | FEED REGULATOR SCREW WASHER | 1 |
| 17-1 | W011-1 | ZIG ZAG FEED DOG | 1 |

GROUP 5 DRIVING & REVERSING MECHANISM GROUP

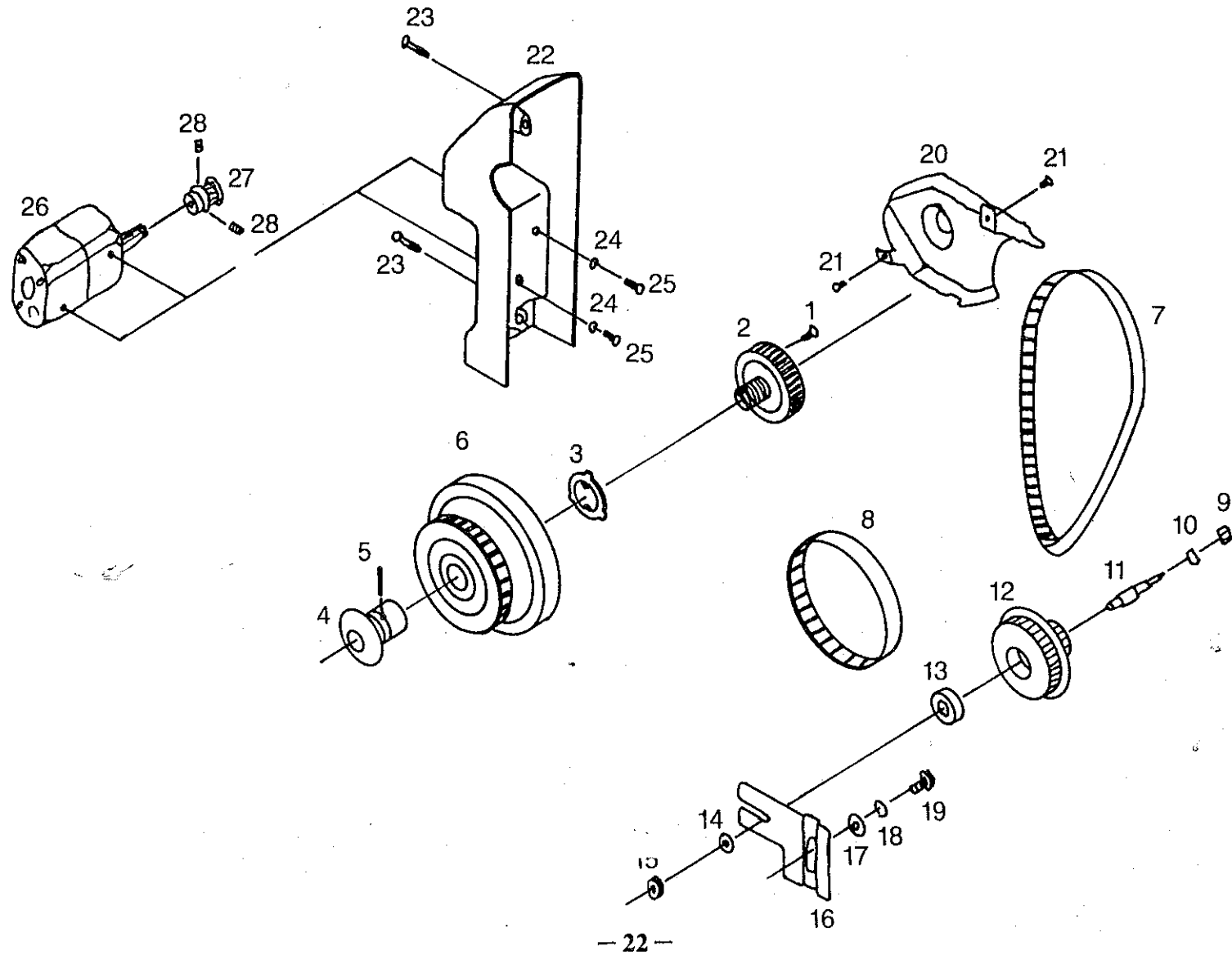


GROUP 5

| KEY NO. | PART NO. | PART NAME | Q'TY |
|---------|----------|--|------|
| 1 | W042 | PRESSER BAR LIFTER | 1 |
| 2 | W042-3 | PRESSER BAR LIFTER HINGE SCREW | 1 |
| 3 | W026 | LIFT BAR | 1 |
| 4 | W042-2 | UPPER LIFT BAR SCREW | 1 |
| 5 | W042-1 | SPACER | 1 |
| 6 | W026-1 | LIFT BAR GUIDE SCREW | 1 |
| 7 | W018 | PRESSER BAR TRACK | 1 |
| 8 | W018-1 | PRESSER BAR TRACK HINGE SCREW | 1 |
| 9 | W020 | REAR PRESSER BAR BRACKET | 1 |
| 10 | A029 | REAR PRESSER BAR SET SCREW | 2 |
| 11 | W018-2 | PRESSER BAR TRACK GUIDE SCREW | 1 |
| 12 | W018-3 | PRESSER BAR TRACK FEED STUD | 1 |
| 13 | W019-1 | PRESSER BAR LOAD SPRING (REAR) | 1 |
| 14 | W019 | REAR PRESSER BAR | 1 |
| 15 | W017 | OUTSIDE PRESSER FOOT BRACKET | 1 |
| 16 | B010 | OUTSIDE PRESSER FOOT BRACKET SCREW | 2 |
| | | OUTSIDE PRESSER FOOT SET SCREW | 1 |
| 17 | W013 | OUTSIDE PRESSER FOOT | 1 |
| 18 | W024 | PRESSER BAR ACTUATOR | 1 |
| 19 | W020-2 | FEED SCREW RING | 1 |
| 20 | W020-1 | PRESSER BAR ACTUATOR FEED SCREW | 1 |
| 21 | W041 | END PLATE | 1 |
| 22 | W041-1 | END PLATE SET SCREW | 2 |
| 23 | W014 | OUTSIDE PRESSER FOOT BRACKET LIMITATOR | 1 |
| 24 | C097 | BRACKET LIMITATOR SET SCREW | 2 |
| 25 | W036 | PRESSER BAR FEED ROD | 1 |

| | | | |
|------|--------|---|---|
| 26 | W024-1 | PRESSER BAR ACTUATOR SPACER | 1 |
| 27 | W022 | END PLATE BEARING SET PLATE | 1 |
| 28 | W041-2 | REVET | 3 |
| 29 | W021 | BEARING BRACKET BUSHING | 2 |
| 30 | W023 | LIFT CRANK ROD BEARING BRACKET PLATE | 2 |
| 31 | W052 | ROCKER END SET RING | 1 |
| 32 | W052-1 | ROCKER SET RING SET SCREW | 2 |
| 33 | W033 | PRESSER BAR ACTUATOR UP-DOWN ROCKER | 1 |
| 34 | W034 | PRESSER BAR ACTUATOR FEED ROCKER | 1 |
| 35 | W035 | CRANK ROD ROCKER | 1 |
| 36 | W053 | CRANK ROD | 1 |
| 37 | D097 | PRESSER BAR ACTUATOR UP-DOWN ROCKER SET SCREW | 2 |
| 38 | W034-3 | CRANK ROD ROCKER SET SCREW | 2 |
| | | PRESSER BAR FEED ROCKER SET SCREW | 2 |
| 39 | W046-2 | CRANK ROD ROCKER GUIDE SCREW | 1 |
| | | UP-DOWN ROCKER GUIDE SCREW | 1 |
| 40 | W046-3 | CRANK ROD ROCKER LOCK SPACER | 1 |
| | | UP-DOWN ROCKER LOCK SPACER | 1 |
| 41 | W046-4 | CRANK ROD ROCKER LOCK WASHER | 1 |
| | | UP-DOWN ROCKER LOCK WASHER | 1 |
| 42 | A061-B | CRANK ROD ROCKER LOCK NUT | 1 |
| | | UP-DOWN ROCKER LOCK NUT | 1 |
| 17-1 | W013-1 | ZIG ZAG OUTSIDE PRESSER FOOT | 1 |

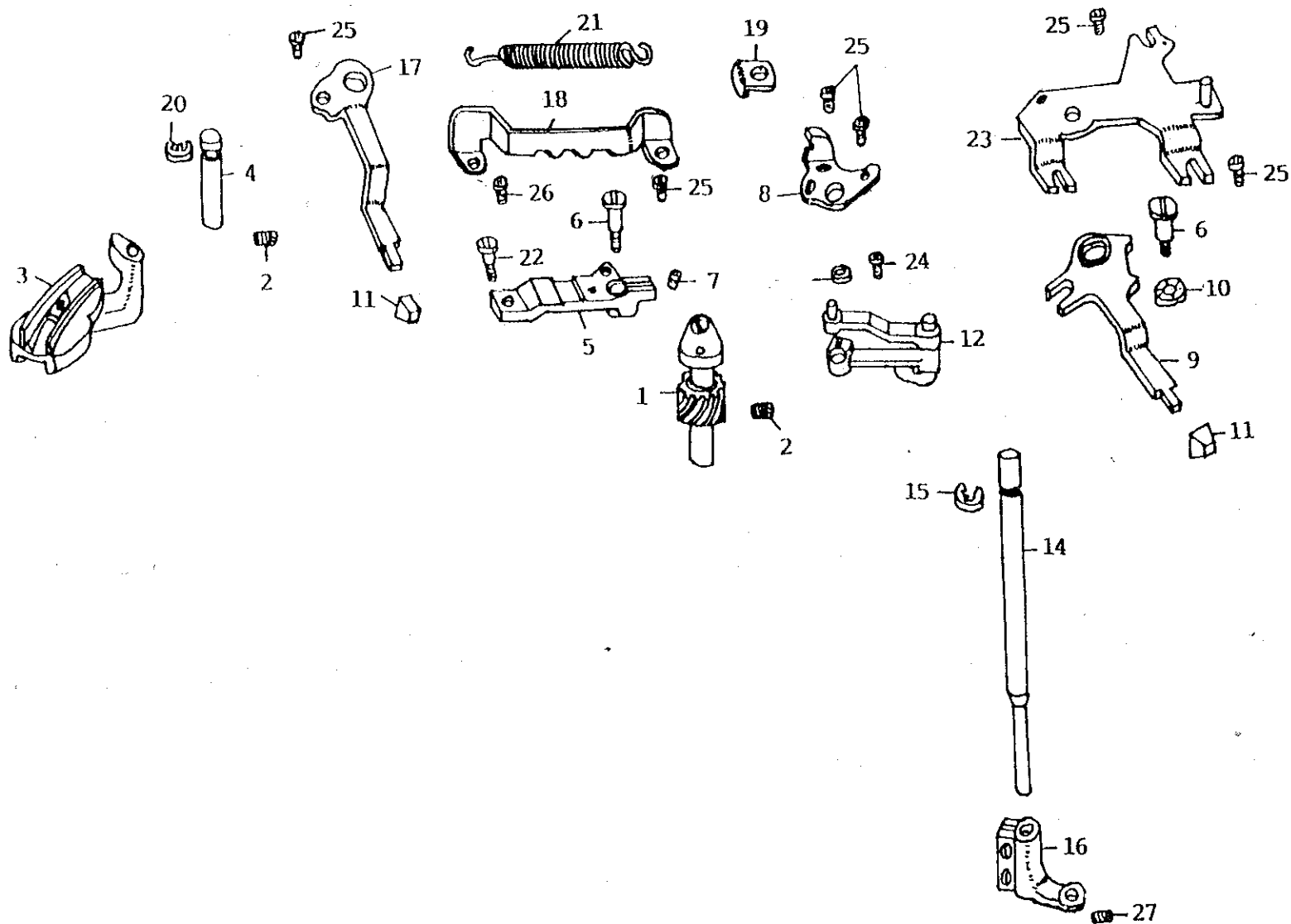
GROUP 6 ELECTRIC POWER & DYNAMIC TRANSMISSION



GROUP 6

| KEY NO. | PART NO. | PART NAME | QTY |
|---------|----------|-------------------------------|-----|
| 1 | A004 | STOP MOTION CLAMP STOP SCREW | 1 |
| 2 | A002-1 | STOP MOTION CLAMP SCREW | 1 |
| 3 | A005 | STOP MOTION CLAMP WASHER | 1 |
| 4 | A003 | BLANCE WHEEL BUSHING | 1 |
| 5 | A006 | BLANCE WHEEL BUSHING SET PIN | 1 |
| 6 | W060 | HAND WHEEL | 1 |
| 7 | W006 | BELT (130XL0.18) | 1 |
| 8 | W007 | BELT (80XL0.25) | 1 |
| 9 | D116 | E5 RING | 1 |
| 10 | W061-5 | IDLE PULLEY SHAFT WASHER | 1 |
| 11 | W061-1 | IDLE PULLEY SHAFT | 1 |
| 12 | W061-3 | IDLE PULLEY | 1 |
| 13 | W061-4 | IDLE PULLEY BEARING | 1 |
| 14 | W061-6 | IDLE PULLEY LOCK WASHER | 1 |
| 15 | W061-2 | IDLE PULLEY SET NUT | 1 |
| 16 | W059 | PULLEY BRACKET | 1 |
| 17 | LT-2M-4 | MOTOR BRACKET SET WASHER | 1 |
| 18 | LT-2M-3 | MOTOR BRACKET SET LOCK WASHER | 1 |
| 19 | LT-2M-2 | MOTOR BRACKET SET SCREW | 1 |
| 20 | W050 | BELT COVER | 1 |
| 21 | A092 | BELT COVER SET SCREW | 2 |
| 22 | W049 | MOTOR BASE (REAR COVER) | 1 |
| 23 | W049-1 | MOTOR BASE SET SCREW | 2 |
| 24 | W049-2 | MOTOR SET WASHER | 2 |
| 25 | C097 | MOTOR SET SCREW | 2 |
| 26 | W003 | MOTOR | 1 |
| 27 | W062-1 | MOTOR PULLEY | 1 |
| 28 | D097 | MOTOR PULLEY SET SCREW | 2 |

GROUP 7 ZIG ZAG MACHANISM GROUP



GROUP 7

| KEY NO. | PART NO. | PART NAME | Q'TY |
|---------|----------|---|------|
| 1 | 703 | ZIG ZAG CAM & GEAR (ASSEMBLY) | 1 |
| 2 | 704 | SET SCREW (3) FOR NO. 703, 707 | 2 |
| 3 | 705-2 | NEEDLE DISPLACEMENT REGULATOR (ASSEMBLY) | 1 |
| 4 | 707 | SHAFT FOR NO. 705-2 | 1 |
| 5 | 708 | ZIG ZAG WIDTH REGULATOR | 1 |
| 6 | 709 | ZIG ZAG WIDTH REGULATOR PIN (2) FOR NO. 708, M712 | 2 |
| 7 | 710 | SET SCREW FOR NO. 708(1) | 1 |
| 8 | M711 | ZIG ZAG CONNECTING PLATE | 1 |
| 9 | M712 | ZIG ZAG REGULATING LEVER | 1 |
| 10 | 718 | SPRING WASHER FOR NO. 709 | 1 |
| 11 | D720 | ZIG ZAG WIDTH LEVER KNOB (2) | 2 |
| 12 | 725 | ZIG ZAG CONNECTING LINK SLIDE BLOCK (ASSEMBLY) | 1 |
| 13 | 725-7 | COLLAR FOR NO. 725 | 1 |
| 14 | M726 | ZIG ZAG VERTICAL SHAFT | 1 |
| 15 | 727 | SNAP RING FOR NO. M726 (1) | 1 |
| 16 | 728 | ZIG ZAG VERTICAL SHAFT ARM | 1 |
| 17 | M729 | NEEDLE POSITION COMPLETE LEVER | 1 |
| 18 | M732 | CLIK STOPER FOR NO. M729 | 1 |
| 19 | M734 | NEEDLE POSITION COMPLETE LEVER GUIDE | 1 |
| 20 | 741 | SNAP RING (2) FOR NO. 707 | 1 |
| 21 | N746 | SPRING FOR NO. M711 | 1 |
| 22 | C749 | ZIG ZAG REGULATING LEVER PIN | 1 |
| 23 | H777 | ZIG ZAG CONTROL PLATE | 1 |
| 24 | 412-1 | SET SCREW FOR NO. 725 (1) | 1 |
| 25 | 154 | SET SCREW FOR NO. M711(2), M729(1), M732(1), N747(1), H777(2) | 7 |
| 26 | 110-1 | SET SCREW FOR NO. M732(1) | 1 |
| 27 | 402 | SET SCREW FOR NO. 728(1) | 1 |